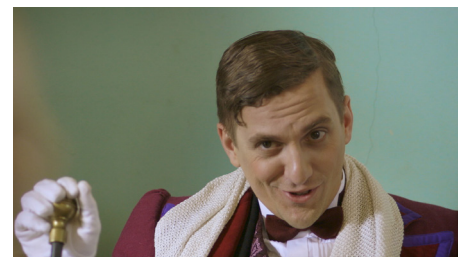




PSHE (Personal, Social, Health, and Economic Ed.)

Stills from our new series



Behind the Scenes of Respectful Relationships

Relationships of any nature should be based on mutual respect. This series covers four important issues surrounding respectful relationships – consent, domestic violence, gender stereotyping, and sexual harassment.



Consent

Set around a film shoot featuring Victorian era socialites, this video clip focuses on consent in relationships. Through the film dialogue, and 'real-life' conversations between the actors and crew, it reinforces an important message about consent between couples. It is not just about the fact that 'no' means 'no', but that not saying 'yes' also means 'no'.

Key Stage 3 – Key Stage 4

Additional Resources

- Comprehension Questions
- Transcript
- Not Saying 'No' Is Not Saying 'Yes'
- Suggested Responses

2017 | 6 min | CC | AR



Domestic Violence

During a film shoot depicting a rather macabre Victorian supper preparation procedure, we are also taken inside the private life of a couple involved in the production. Things are strained between them as we learn of an incident that occurred the night before. This clip reinforces the fact that domestic violence is never okay, and that both perpetrators and victims should seek help.

Key Stage 3 – Key Stage 4

Additional Resources

- Comprehension Questions
- Transcript
- Help! I Need Somebody!
- Suggested Responses

2017 | 6 min | CC | AR



Gender

As we watch a scene being filmed where the arrival of a platypus triggers off debate between Victorian era scientists about the animal's exact identity, we learn that one of the film crew is genderqueer. It gives rise to a discussion between others on the set about gender identity and explores how stereotyping about adherence to gender-based behavioural norms can challenge and confront conventional mindsets.

Key Stage 3 – Key Stage 4

Additional Resources

- Comprehension Questions
- Transcript
- Little Boy Blue vs Pretty in Pink
- Suggested Responses

2017 | 6 min | CC | AR



Sexual Harrasment

During the filming of a light-hearted production set in Victorian times, a scene portrays a man making an unwelcome advance to a woman. When the filming stops, we see that sexual harassment is also very much alive today in a whole range of situations. This clip explores sexual harassment through a scenario involving role reversal, delivering a poignant message about appropriate and respectful behaviour in relationships.

Key Stage 3 – Key Stage 4

Additional Resources

- Comprehension Questions
- Transcript
- Dear Diary
- Suggested Responses

2017 | 6 min | CC | AR