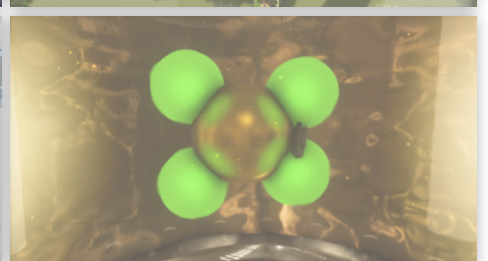
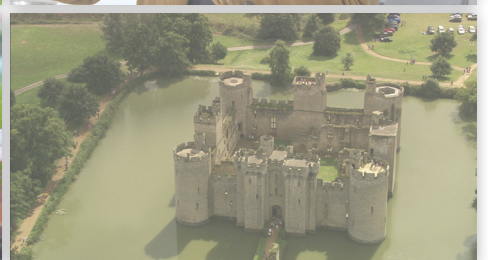
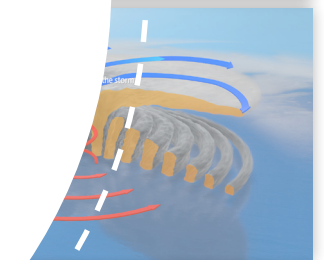
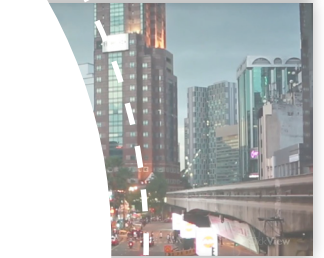


▶ ClickView Dec. 2017

Monthly Curriculum
Library Update for
Secondary Schools



Contents

English

The Life and Times of Shakespeare

Shakespeare's Footprints	3
Shakespeare's Works and Workplaces	4
Shakespeare's World	4

PSHE

Behind the Scenes of Respectful Relationships

Consent	5
Domestic Violence	6
Gender	6
Sexual Harassment	6

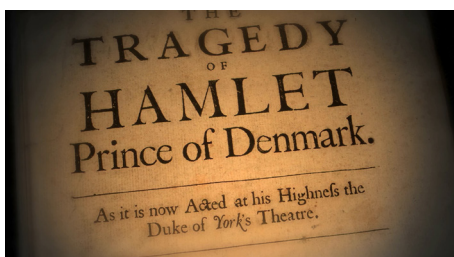
Catalogue Key

min	Duration in minutes
AR	Additional Resources: Student activities and support notes to assist teachers
CC	Closed captions



English

Stills from our new series



The Life and Times of Shakespeare

In a world saturated with Shakespeare, this series cuts through all things extraneous (and tedious) and gives students the basics about the Bard. A storehouse of vital facts, examples, and explanations, it is sure to prove useful for both first-timers and revising seniors.



Shakespeare's Footprints

The world over, teachers hear the lament 'why do we have to study Shakespeare?' from their students. Here are the answers to that ubiquitous question! This densely packed and student-friendly programme includes well-known examples from his plays and looks at his contribution to the English lexicon to demonstrate Shakespeare's enduring impact on language and the study of literature.

Key Stage 4

Additional Resources

- Comprehension Questions
- Suggested Responses
- Playbill
- Transcript
- Stories That Live On

2017 | 8 min | CC | AR



Shakespeare's Works and Workplaces

Educators looking to introduce students to features of Shakespeare's plays and the places where they were presented: this is your stop. This concise presentation offers students of all abilities a path to clearly understanding the main features of a Shakespearean play – from the page to the stage – and to put themselves in the picture as audience members.

Key Stage 4

Additional Resources

- Comprehension Questions
- Transcript
- The World's a Stage
- Suggested Responses

2017 | 13 min | CC | AR



Shakespeare's World

Positioning Shakespeare historically and geographically is a must if we are to appreciate his works. This study opens in the wider context of Elizabethan and Jacobean England and narrows to Shakespeare's familial, personal and creative profile. We also nail down the main forms and genres in which he wrote, along with key techniques such as iambic pentameter.

Key Stage 4

Additional Resources

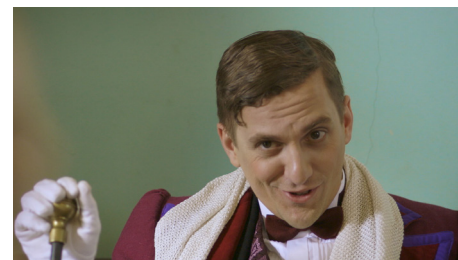
- Comprehension Questions
- Suggested Responses
- Great Chain of Being
- Transcript
- Missing Pieces

2017 | 13 min | CC | AR



PSHE (Personal, Social, Health, and Economic Ed.)

Stills from our new series



Behind the Scenes of Respectful Relationships

Relationships of any nature should be based on mutual respect. This series covers four important issues surrounding respectful relationships – consent, domestic violence, gender stereotyping, and sexual harassment.



Consent

Set around a film shoot featuring Victorian era socialites, this video clip focuses on consent in relationships. Through the film dialogue, and 'real-life' conversations between the actors and crew, it reinforces an important message about consent between couples. It is not just about the fact that 'no' means 'no', but that not saying 'yes' also means 'no'.

Key Stage 3 – Key Stage 4

Additional Resources

- Comprehension Questions
- Transcript
- Not Saying 'No' Is Not Saying 'Yes'
- Suggested Responses

2017 | 6 min | CC | AR



Domestic Violence

During a film shoot depicting a rather macabre Victorian supper preparation procedure, we are also taken inside the private life of a couple involved in the production. Things are strained between them as we learn of an incident that occurred the night before. This clip reinforces the fact that domestic violence is never okay, and that both perpetrators and victims should seek help.

Key Stage 3 – Key Stage 4

Additional Resources

- Comprehension Questions
- Transcript
- Help! I Need Somebody!
- Suggested Responses

2017 | 6 min | CC | AR



Gender

As we watch a scene being filmed where the arrival of a platypus triggers off debate between Victorian era scientists about the animal's exact identity, we learn that one of the film crew is genderqueer. It gives rise to a discussion between others on the set about gender identity and explores how stereotyping about adherence to gender-based behavioural norms can challenge and confront conventional mindsets.

Key Stage 3 – Key Stage 4

Additional Resources

- Comprehension Questions
- Transcript
- Little Boy Blue vs Pretty in Pink
- Suggested Responses

2017 | 6 min | CC | AR



Sexual Harrasment

During the filming of a light-hearted production set in Victorian times, a scene portrays a man making an unwelcome advance to a woman. When the filming stops, we see that sexual harassment is also very much alive today in a whole range of situations. This clip explores sexual harassment through a scenario involving role reversal, delivering a poignant message about appropriate and respectful behaviour in relationships.

Key Stage 3 – Key Stage 4

Additional Resources

- Comprehension Questions
- Transcript
- Dear Diary
- Suggested Responses

2017 | 6 min | CC | AR